

Wide Input Voltage Range 8 Watt Dc-Dc Converter



FEATURES:

- 2:1 Wide Input Voltage.
- 8 Watt 24PIN DIL Package.
- Efficiency To 82%
- PI Input Filter.
- 1600Vdc Isolation
- MTBF:>1,500,000 hrs
- Operating Temperature:-40°C TO +100°C



Specifications typical at TA=25°C, nominal input voltage and rated output current unless otherwise specified

Part Number	Input Voltage Vdc	Input Current		Output Voltage Vdc	Output Current Full Load (mA)	Efficiency %TYP
		No-Load (mA TYP)	Full Load (mA TYP)			
ICI08-05S12R	4.5-9	25	1927	12	666	83
ICI08-05S15R	4.5-9	25	1927	15	533	83
ICI08-05D12R	4.5-9	25	1927	±12	±333	83
ICI08-05D15R	4.5-9	25	1927	±15	±266	83
ICI08-12S03R	9-18	20	784	3.3	2424	85
ICI08-12S05R	9-18	20	784	5	1600	85
ICI08-12S12R	9-18	20	784	12	666	85
ICI08-12S15R	9-18	20	784	15	533	85
ICI08-12D05R	9-18	20	784	±5	±800	85
ICI08-12D12R	9-18	20	784	±12	±333	85
ICI08-12D15R	9-18	20	784	±15	±267	85
ICI08-24S03R	18-36	20	392	3.3	2424	85
ICI08-24S05R	18-36	20	392	5	1600	85
ICI08-24S12R	18-36	20	392	12	666	85
ICI08-24S15R	18-36	20	392	15	533	85
ICI08-24D05R	18-36	20	392	±5	±800	85
ICI08-24D12R	18-36	20	392	±12	±333	85
ICI08-24D15R	18-36	20	392	±15	±267	85
ICI08-48S03R	36-72	15	196	3.3	2424	85
ICI08-48S05R	36-72	15	196	5	1600	85
ICI08-48S12R	36-72	15	196	12	666	85
ICI08-48S15R	36-72	15	196	15	533	85
ICI08-48D05R	36-72	15	196	±5	±800	85
ICI08-48D12R	36-72	15	196	±12	±333	85

Input Specifications

Parameters	Conditions	Min	Typ	Max	Units
Voltage Types				2:1	
Filter	PI TYPE				

Output Specifications

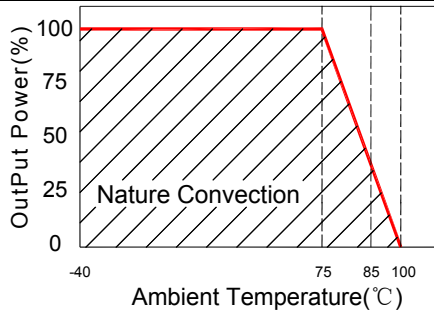
Parameters	Conditions	Min	Typ	Max	Units
Voltage Tolerance				±2	%
Short Circuit Protection	Continuous				
Line Regulation				±0.5	%
Load Regulation	Single (F.L To 10% Load)			±0.5	%
Load Regulation	Dual (F.L To 1/4 Load)			±1.0	%
Ripple & Noise	BW=DC To 20MHz			100	mVp-p
Transient response setting time	50% load step change		350		us

General Specifications

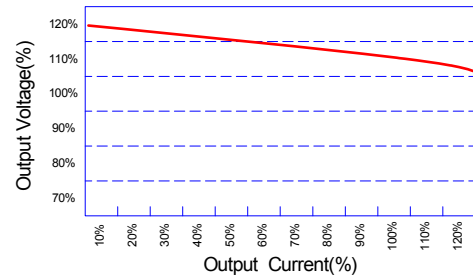
Parameters	Conditions	Min	Typ	Max	Units
Isolation Resistance	500Vdc	1000			MΩ
Switching Frequency			400		KHz
Operating Temperature		-40		100	°C
Humidity	Non Condensing			95	%
Cooling	Free air Convection				
Case material	Nickel Coated With Non-Conductive Base				
Weight			16.2		g
Dimensions	31.6x20.1x10.0				
Potting Material	Epoxy (UL94V-0 rated)				
Radiated Emissions	EN55022	CLASS A			
Radiated Emissions	FCC 47 CFR Part 15 subpart A	CLASS A			

Wide Input Voltage Range 8 Watt Dc-Dc Converter

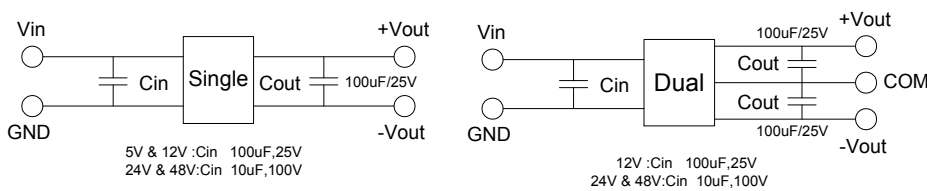
Temperature Derating Graph



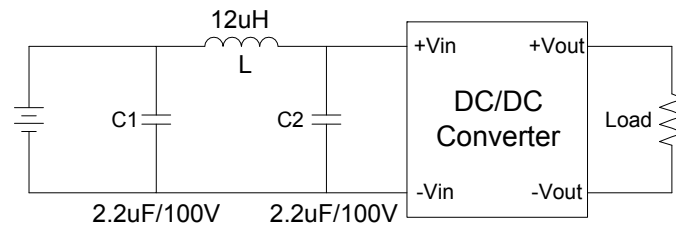
Tolerance Envelope Graph



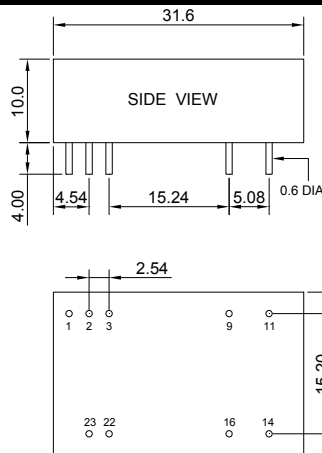
Recommended Test Circuit



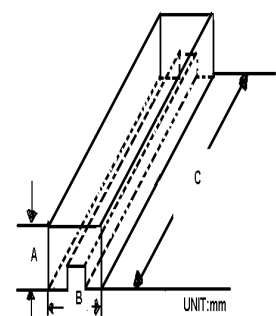
Suggest adding input external filter(C1,C2,L)to meet conducted emissions(En55022 class A)



Markings and dimensions



Packaging



SIZE(mm)		
A	B	C
18.71	23.00	52.2

UNIT:mm XX.X±0.5 XX.XX±0.25

PIN Connection

PIN	1	2,3	9	11	14	16	22,23
SINGLE	Remote On/Off	-Vin	NC	NC	+Vout	-Vout	+Vin
DUAL	Remote On/Off	-Vin	Common	-Vout	+Vout	Common	+Vin

NOTE: Pin Size is Tolerance 0.6Φ ±0.05mm